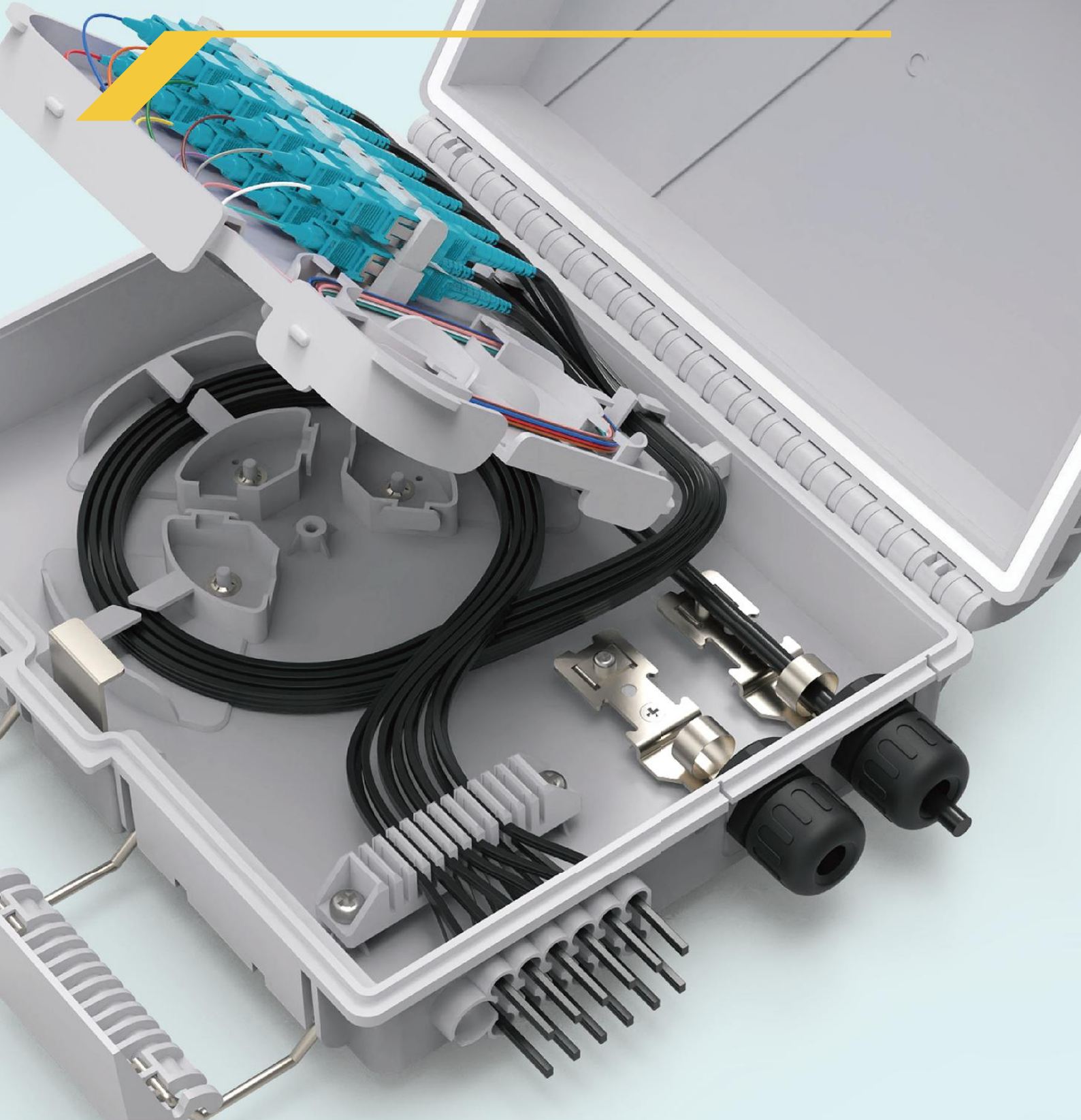


Enmane

# OPTICAL DISTRIBUTION BOX



## Optical Distribution Box



### EM-IZU2901-01

lightweight and exquisite box  
Customizable LOGO  
Supports splicing, wiring, and fiber storage



### EM-IZU2902-02

lightweight and exquisite box  
Customizable LOGO  
Supports splicing, wiring, and fiber storage



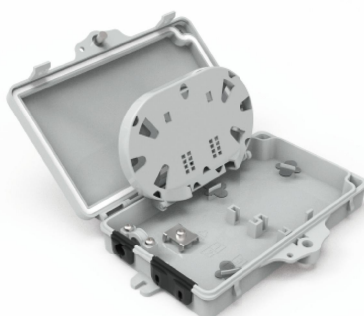
### EM-IZU2903-02

lightweight and exquisite box  
Customizable LOGO  
Supports splicing, wiring, and fiber storage



### EM-IZU2904-04

lightweight and exquisite box  
Customizable LOGO  
Supports splicing, wiring, and fiber storage



### EM-FZU2905-02

Fully enclosed structure  
Waterproof, dustproof, and anti-aging design  
IP65  
Supports fiber cable/drop cable's fixing,  
distribution and storage  
Supports splicing, wiring, and fiber storage



### EM-FZU2906-02

Fully enclosed structure  
Waterproof, dustproof, and anti-aging design  
IP65  
Supports fiber cable/drop cable's fixing,  
distribution and storage  
Supports splicing, wiring, and fiber storage



### EM-FZU2907-04

Fully enclosed structure  
Waterproof, dustproof, and anti-aging design  
IP65  
Supports fiber cable/drop cable's fixing,  
distribution and storage  
Supports splicing, wiring, and fiber storage



### EM-FZU2908-08

Fully enclosed structure  
Waterproof, dustproof, and anti-aging design  
IP65  
Supports fiber cable/drop cable's fixing,  
distribution and storage  
Supports splicing, wiring, and fiber storage



### EM-FZU2909-08

Fully enclosed structure  
Waterproof, dustproof, and anti-aging design  
IP65  
Supports fiber cable/drop cable's fixing,  
distribution and storage  
Supports splicing, wiring, and fiber storage

## Optical Distribution Box



### EM-FZU3001-12

Fully enclosed structure  
Waterproof, dustproof, and anti-aging design  
IP65  
Supports fiber cable/drop cable's fixing,  
distribution and storage  
Supports splicing, wiring, and fiber storage



### EM-FZU3002-12

Fully enclosed structure  
Waterproof, dustproof, and anti-aging design  
IP65  
Supports fiber cable/drop cable's fixing,  
distribution and storage  
Supports splicing, wiring, and fiber storage



### EM-FZU3003-24

Fully enclosed structure  
Waterproof, dustproof, and anti-aging design  
IP65  
Supports fiber cable/drop cable's fixing,  
distribution and storage  
Supports splicing, wiring, and fiber storage



### EM-FZU3004-16

Fully enclosed structure  
Waterproof, dustproof, and anti-aging design  
IP65  
Supports fiber cable/drop cable's fixing,  
distribution and storage  
Supports splicing, wiring, and fiber storage



### EM-FZU3005-16

Fully enclosed structure  
Waterproof, dustproof, and anti-aging design  
IP65  
Supports fiber cable/drop cable's fixing,  
distribution and storage  
Supports splicing, wiring, and fiber storage

## SOCKET PANEL



### EM-SZU3107-01

Standard 86 type panel size  
Indoor termination application  
Customized LOGO  
Suitable for SC or DLC adapters

